

REXIAA- Group



Your Partner For Global Industrial Hybrid Solutions

REXIAA-GROUP 2021



ISSOIRE
AVIATION

AIRTN

2CA
CONCEPT COMPOSITES ALVERGNE

OSCIT

Don Foster

LUSINA

MCP

www.rexiaa-group.com

SPORTS



INDUSTRY

GROUND TRANSPORTS



AIRTM+

LUSINA

OSC.it

REXiAA+
Group

REXiAA+

ECA
CONCEPT CONSTRUCTION

ISSOIRE
AVIATION

MCP+

Don Foster

AERONAUTICS



Rexiaa Group

People : 530



Turn over (2021) : 60 M€



Qualifications



EASA Part 21 G/J Approved
Part 145 all rating

Approved R&D department

EASA PART 21G AGREEMENT

EASA PART 21J AGREEMENT

APDOA

ISO 9001

BUREAU VERITAS
Certification



EN 9100

BUREAU VERITAS
Certification



Clients :

- ☺ Airbus Helicopters
- ☺ Dassault
- ☺ Safran
- ☺ Thales
- ☺ MBDA
- ☺ Potez
- ☺ Michelin
- ☺ Nexter
- ☺ DGA...



They Trust REXIAA-Group

Aeronautical 65%

Non Aeronautical 20%



Own products 15%



**GLOBAL INDUSTRIAL SOLUTIONS
FOR
HYBRID AEROSTRUCTURES**

RESEARCH
INNOVATION
DEVELOPMENT

COMPOSITE
TECHNOLOGIES

SPARE, MAINTENANCE
& REPAIR

ASSEMBLY /
INTEGRATION

METAL TECHNOLOGIES

STRUCTURAL METAL
BONDING

MACHINING

Confidential – REXIAA intellectual property

Design & Engineering Activities

1. Design Activities :

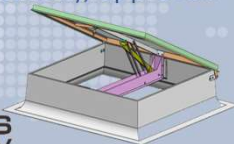
- Parts and assemblies Design (Catia V5, PTC Creo)
- Molds Design (Catia V5, PTC Creo)
- ELFINI Calculation
- Patran/Nastran
- Laminate modeler capability for composites calculation



2. Testing

- Static test
- Fatigue test
- Ground Vibration Test and Flutter analysis
- Flight test (development and certification), approved flight test organization by EASA
- Material characterisation

domes
puy
LE DESIGN D'AVIATION
AU Cœur de l'Europe



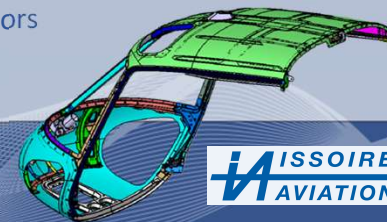
3. Certification :

- Certification program follow up according to DOA.
- Structural part justification files
- Operational document approval
- Design definition file follow up
- Modifications and Repairs approval
- Continuous airworthiness activity



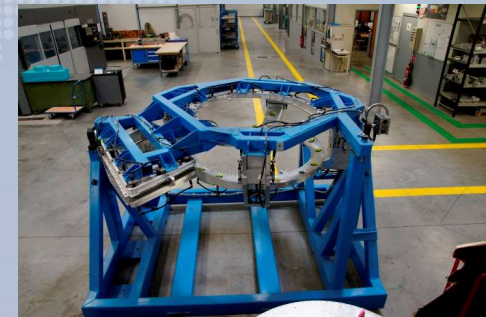
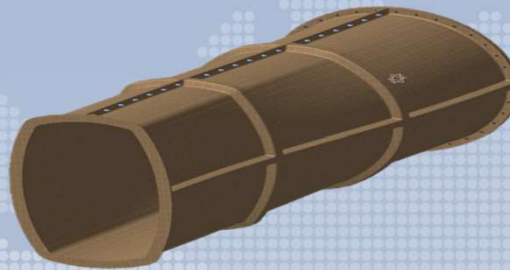
4. Equipement supplier/designer for AH :

- Design Organization Interface with Airbus Helicopter since end 2018
- Continuous modification and improvement of equipments :
 - H125 canopy
 - H120/130/175 doors



Tool Design / Industrialisation

- Molding Tools (Metal & Composite)
- Stamping and bending tools
- Numerical cutting & drilling Tools
- Assembly and integration tools
- Control and interchangeability tools
- Special machines
- Development of special processes



Composite Technologies

REXiAA+
Group

- Draping of pre-impregnated fabrics (glass, carbon, kevlar)
- Sandwich panels
- Compression Molding
- RTM and RTM light injection
- Infusion
- Contact and projection molding
- PU Protective Coating



ISSOIRE
AVIATION

2CA
CONCEPT COMPOSITES AUVERGNE

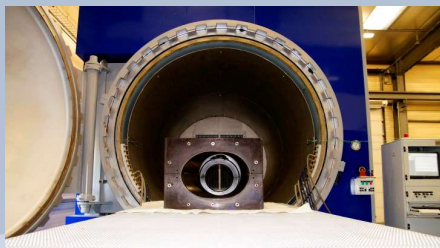
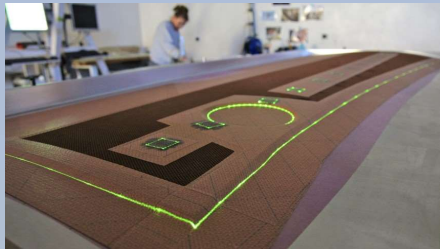
AIRTM+

OSCAR

Confidential – REXIAA intellectual property

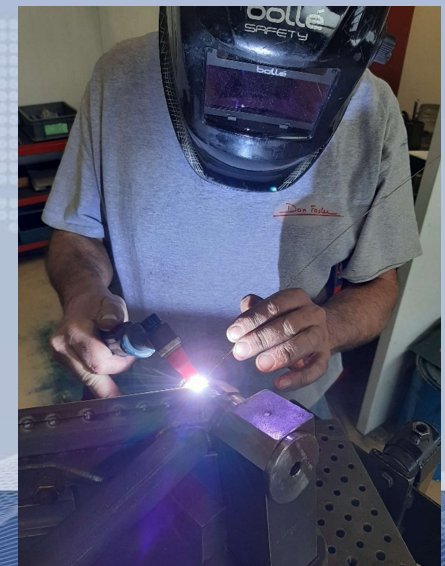
Composite Technologies Industrial Resources

- Fiber placement optimization (Fibersim)
- Automated folds cutting
- Draping rooms with controlled temperature & humidity
- Air conditioned bonding rooms
- Cold rooms -4° & -18°
- LPT & SL Laser positionning
- 14 Autoclaves (maxi D 4000, L 7000)
- Heated presses (maxi 3000 x 1500, 160 T, 400 °)
- Ovens (maxi 7000 x 3000 x 2200)
- RTM Injection line
- Simultaneous projection line
- 3 and 5 axes CN machining (maxi 6500 x 4000 x 2000)
- 5 Axes CN waterjet cutting
- NDT US control



Mechanical Welding TIG, MIG, STT, by point welding

- Titanium
- Stainless Steel
- Light Alloys



Sheet Metal Working

- Laser & Numerical Cutting
- Folding and stamping presses (max 750T)
- Alloy thermic treatment



Small & Medium Size Machining

15 Machining centres

Maximum capacities 1600 x 800 x 600

- Prototypes, development, small series
- Large series
- Ceramic Machining
- Tooling

and

- Turning
- Electroerosion
- Polishing
- Rectification



Don Foster

Large Dimension Machining

Mobile frame milling machine

Maximum capacities 12000 x 2700 x 1500



Gantry milling machine

Maximum capacities 4000 x 3000 x 1300



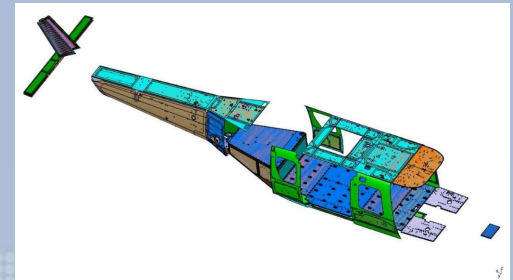
Milling & Surfacing Metal Sheets

Maximum capacities 18000 x 3000 x 700



Structural Metal-Metal Bonding

- Unclogged OAC surface treatment chain (2500 x 1600)
- Primer application under regulated atmosphere



Surface Treatments and Painting To Gain in Reactivity

■ Treatment of aluminium alloys

- Unclogged OAC
- Alodine 1200
- Sulfochromic stripping

Automated chain (L:2500 h:1600 l:240)



■ Bonding primer application

■ Paint application

- 10 paints cabs with ovens, thermic and hygrometric regulation (Max dim 120 m²)
- Dry and wet sandblaster

■ Varnish application



Assembly & Integration

- Sub assembly and structural assembly
- Pipes insulation (air conditioner, fuel feeder)
- Systems & engines integration



Spare Maintenance & Repair



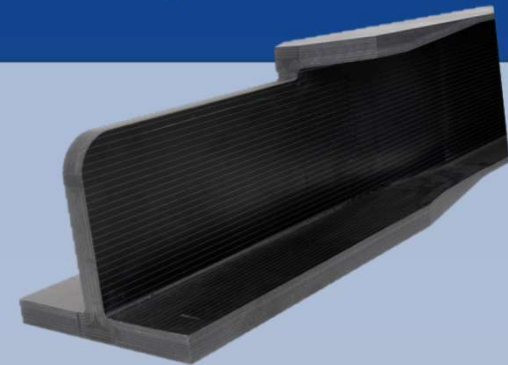
EASA Part 21 G/J Approved
Part 145 all rating

- Composite Parts
- Metallic Parts
- Hybrid Parts



Innovation 2019/2021

- One shot process
- Rapid manufacturing
- Compression Molding
- RTM process
- Out of autoclave technologies
- Radome solutions
- UAV Concept



Our Philosophy

- Willingness to reduce cost
- Transparency
- Strong innovation policy
- Co-design partnership
- Competitiveness attitude
- Customer Mindset



A workforce of over 500 employees will support you through your projects in our 71 000 sqm of production area.



With 7 companies working in collaborative and complementary partnership we can be extremely responsive to whatever requirements you may have. We have all the services required to propose a global subcontracting offer (GSC).



Confidential – REXIAA intellectual property